

LECTURE – 13

CREATING MAPS

Course Instructor:

Engr. Hizb Ullah Sajid

Content

- Map Production
- Creating Maps in QGIS
- Creating Web Based GIS Maps

Map Production

- The end result of a GIS study is usually a map that can be used for making decisions.
- Once you have created a GIS map showing useful information, it needs to be exported to a format that anyone's computer can read, as well as can be printed.
- In QGIS, both exporting and printing is handled via the Map Composer.

Map Production

■ Map production

- It is the process of arranging map elements on a sheet of paper in a way that, even without many words, the average person can understand what it is all about.
- Maps are usually produced for presentations and reports where the audience or reader is a politician, citizen or a learner with no professional background in GIS.
- Because of this, a map has to be effective in communicating spatial information.

Map Production

Common Elements of a Map:

- Title
- Map Body
- Legend
- North Arrow
- Scale Bar
- Acknowledgement
- Map Border

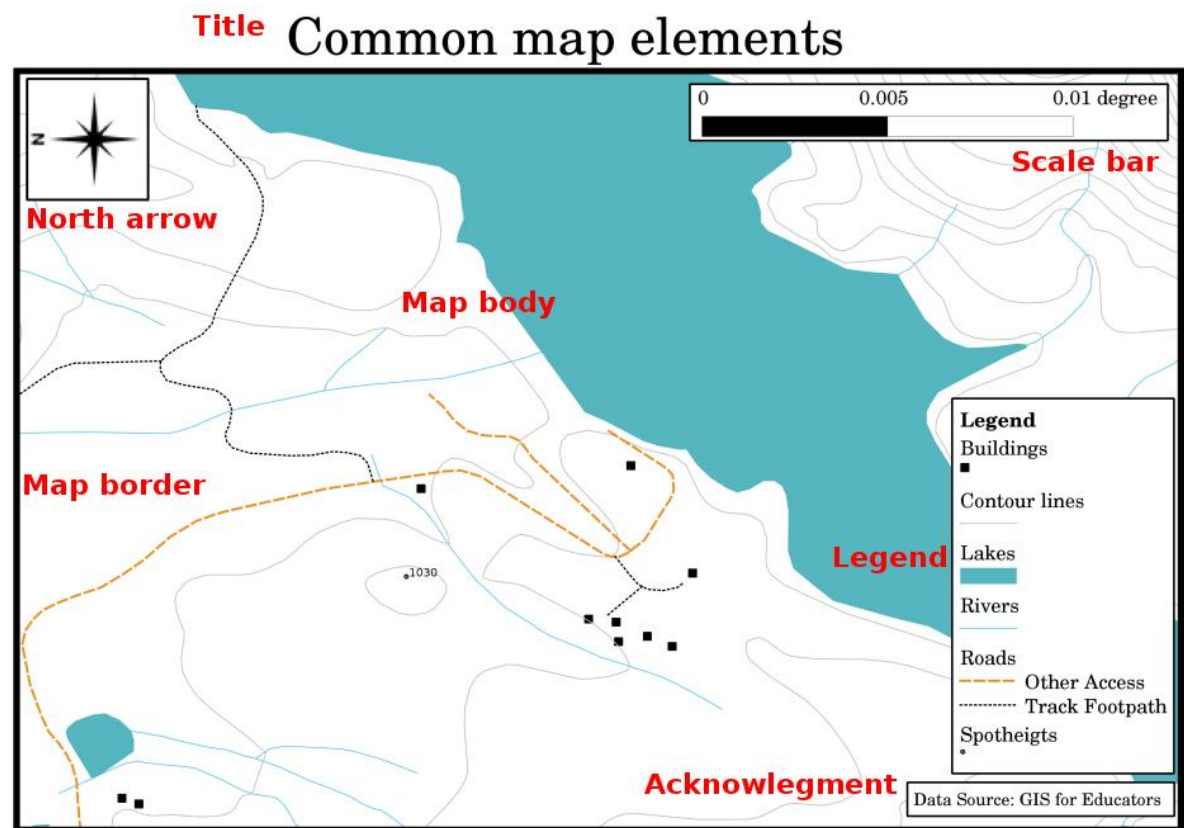


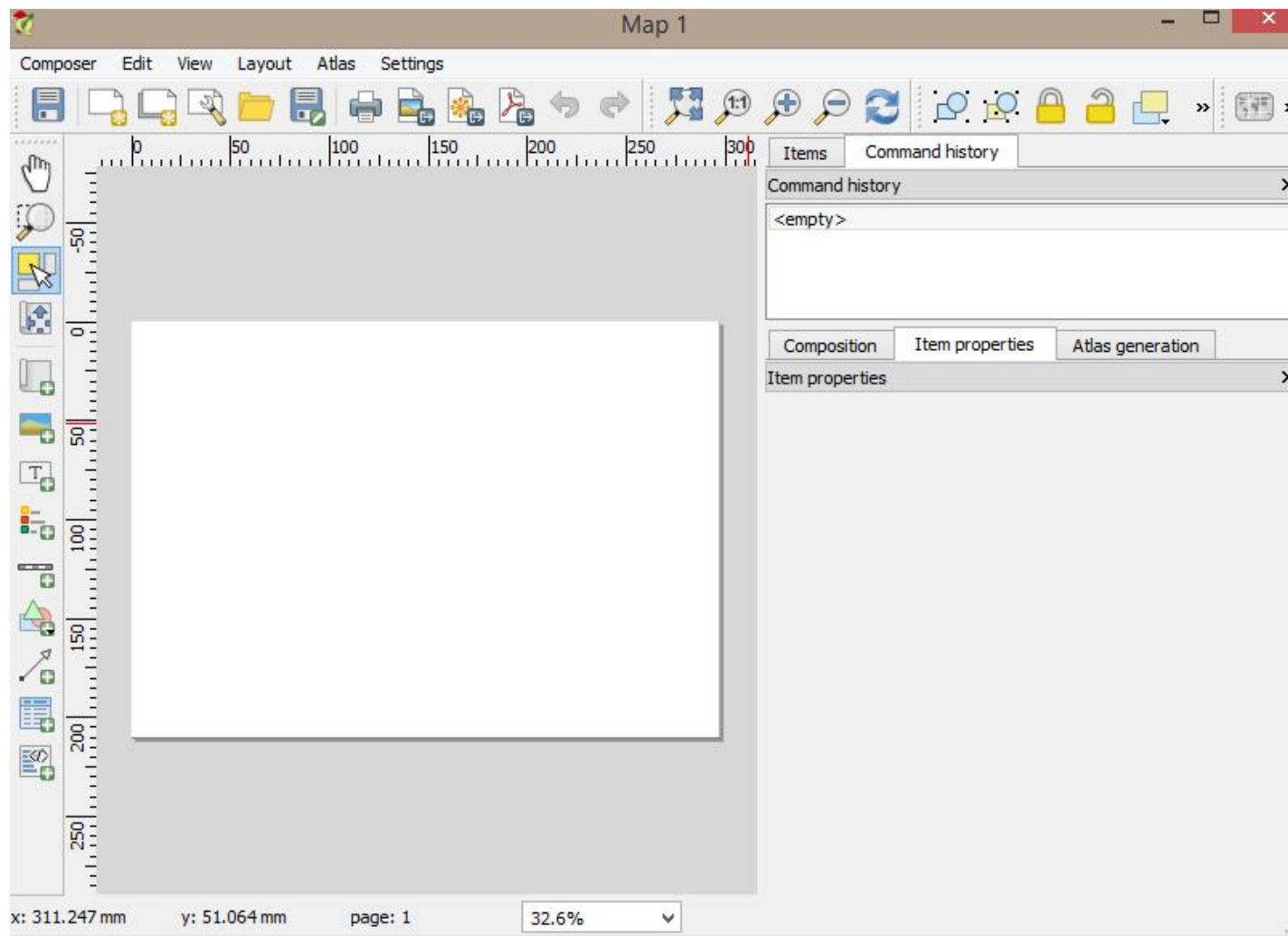
Image Source: QGIS Documentation

Creating Maps in QGIS

- Command Path for Map Composer:
 - Project > Compose Manager > Add > Give Name (for example: Map I) > Ok
 - A new dialogue box will open where you can create map.

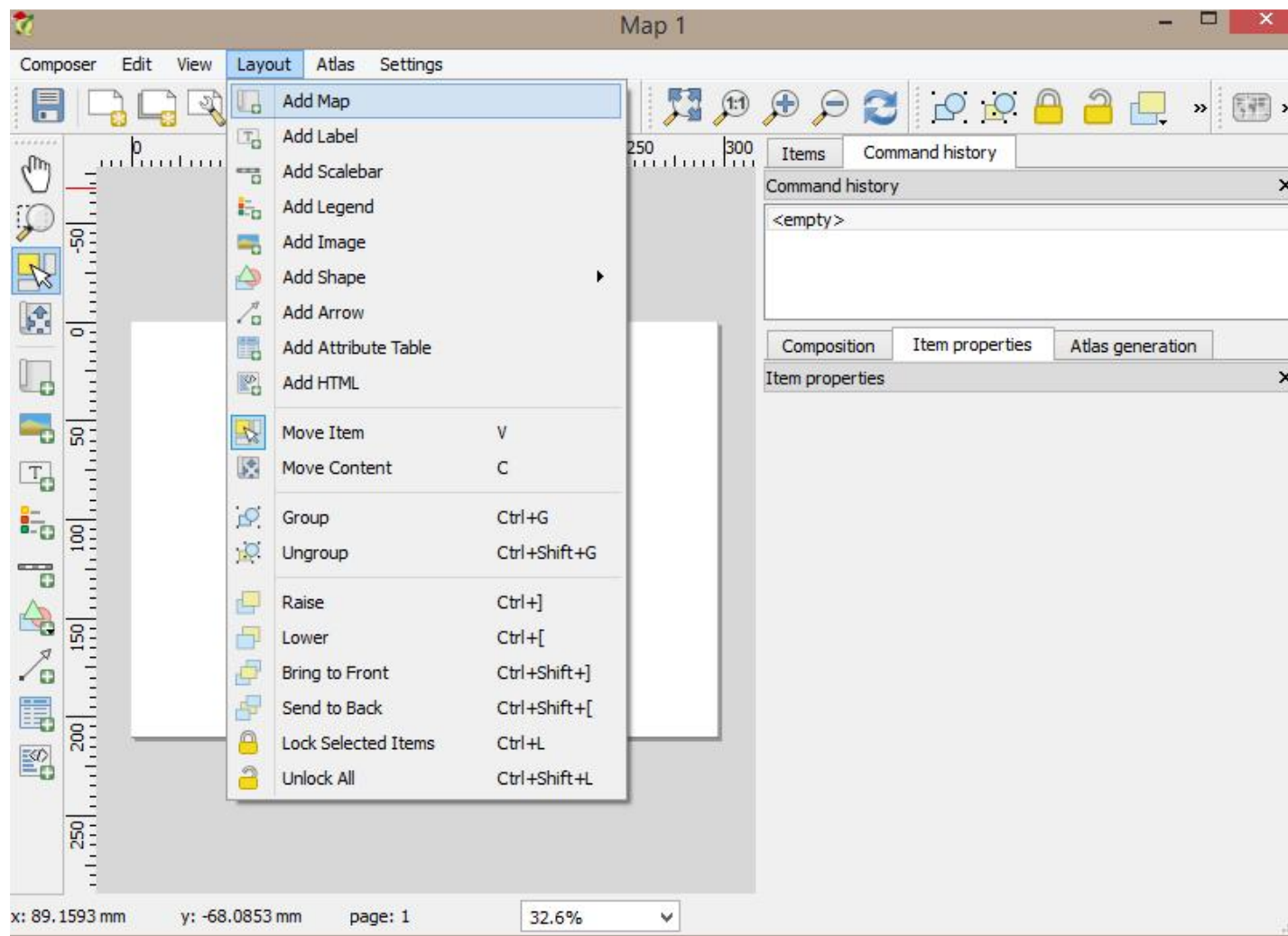
Creating Maps in QGIS

■ Map Composer



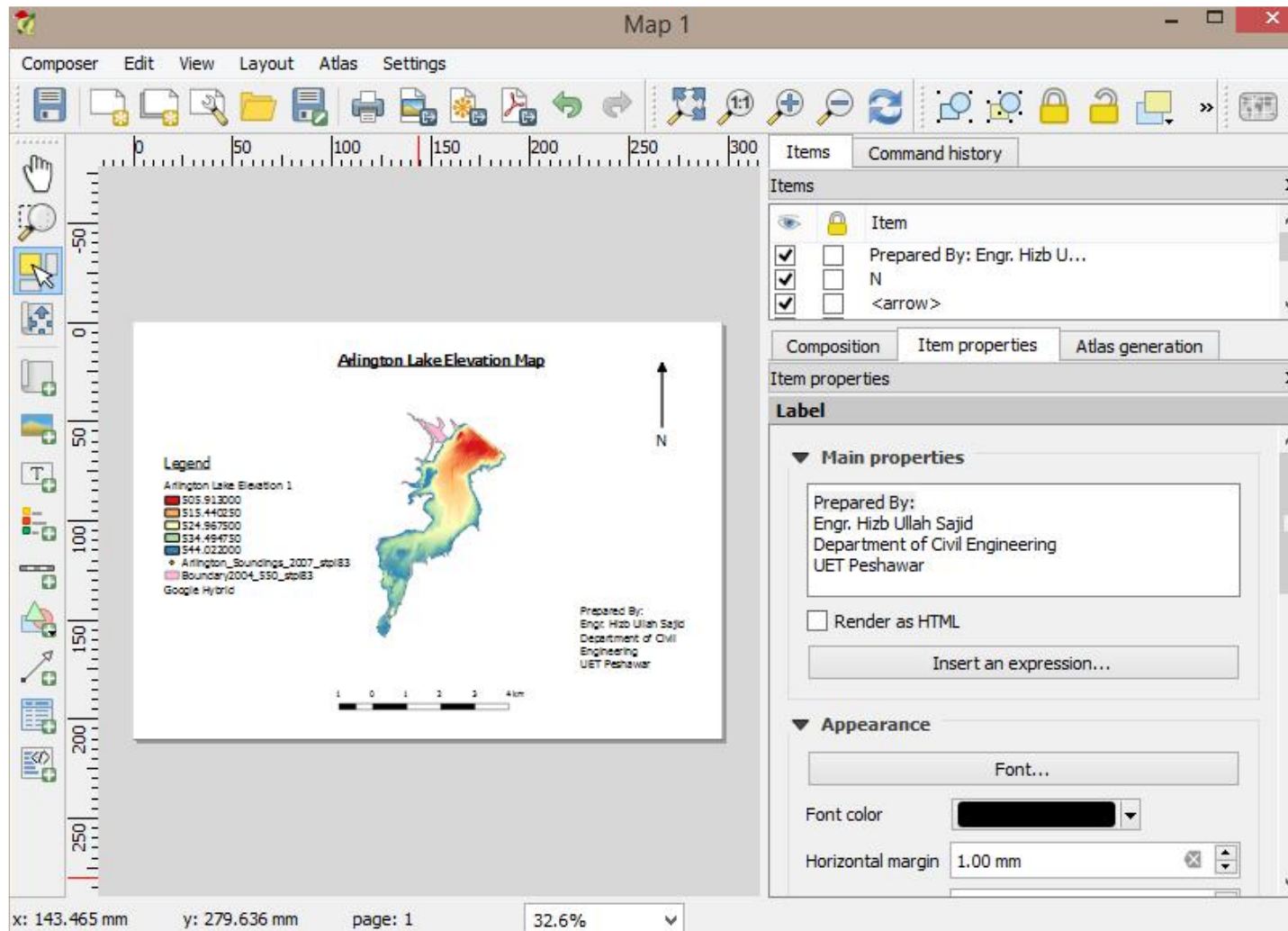
Creating Maps in QGIS

■ Map Composer



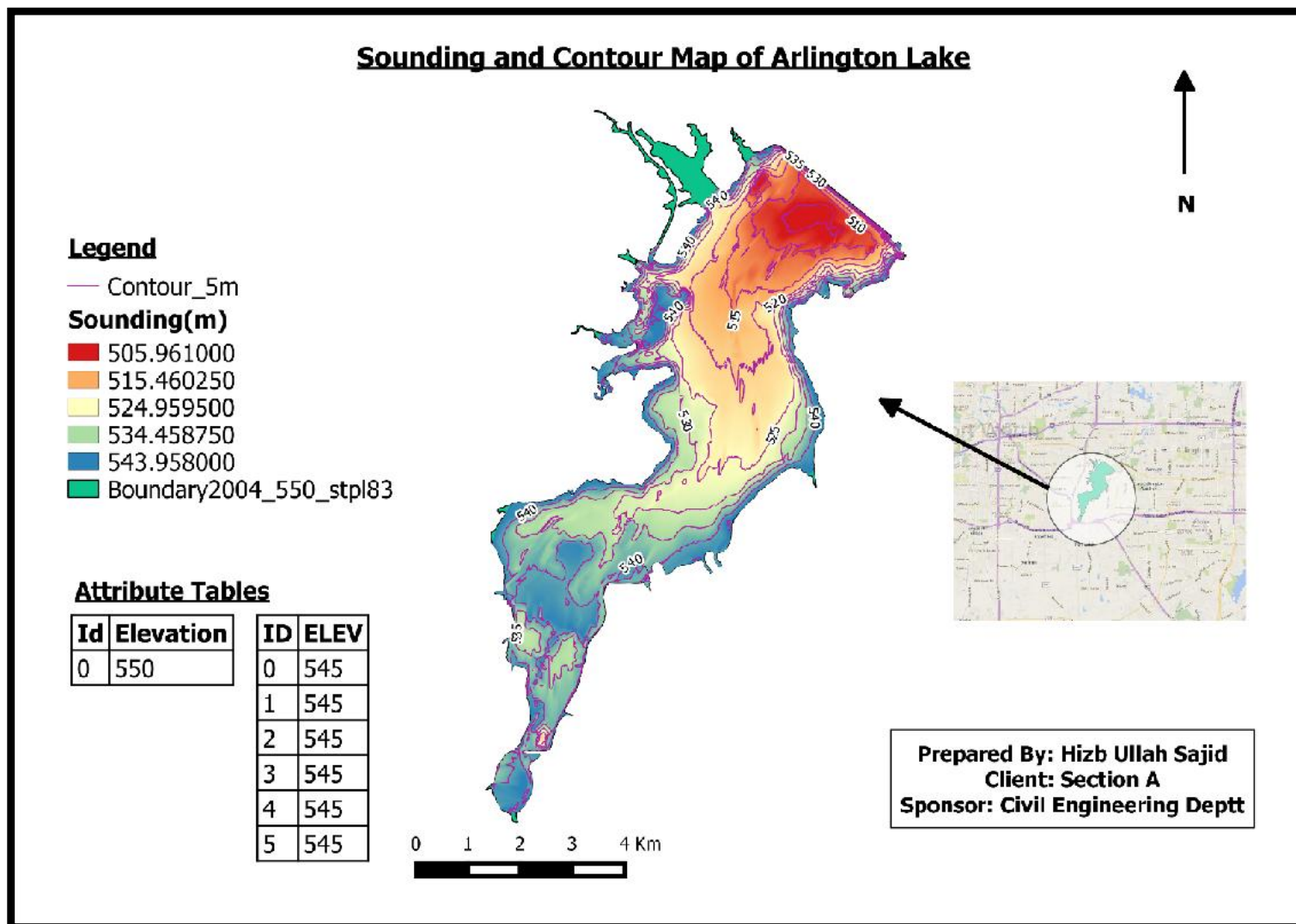
Creating Maps in QGIS

Map Composer



Creating Maps in QGIS

Map Developed Using QGIS Map Composer



Creating Web Based GIS Maps

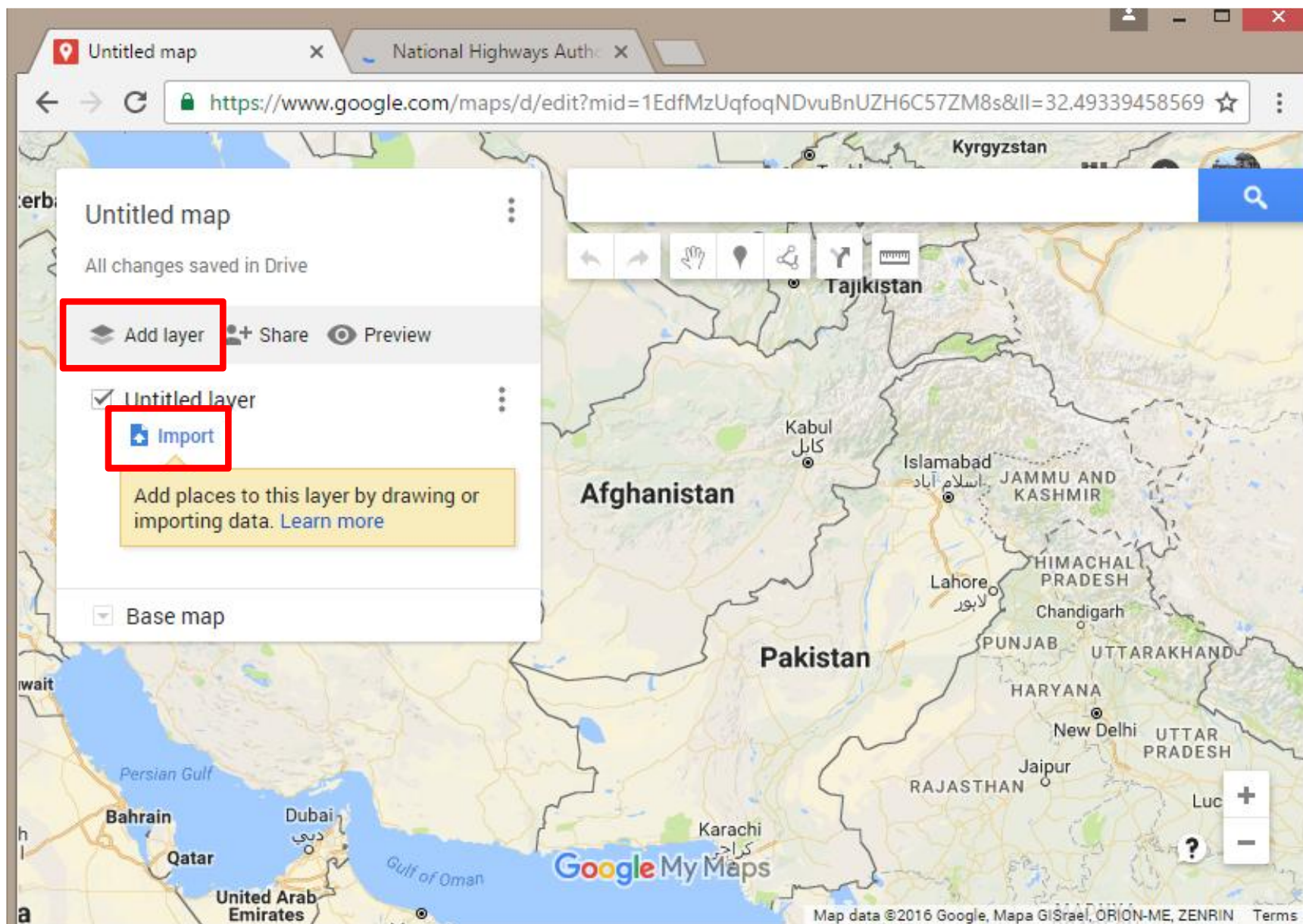
- Web based GIS maps can be conveniently shared over web with other users.
- Many tools are available for developing such interactive maps
- **Google My Map** is a very easy-to-use application for developing web based GIS maps (www.google.com/mymaps)
- National Highways Authority (NHA) has utilized Google My Map application to develop web based maps for public use (available on NHA website www.nha.gov.pk)

Creating Web Based GIS Maps

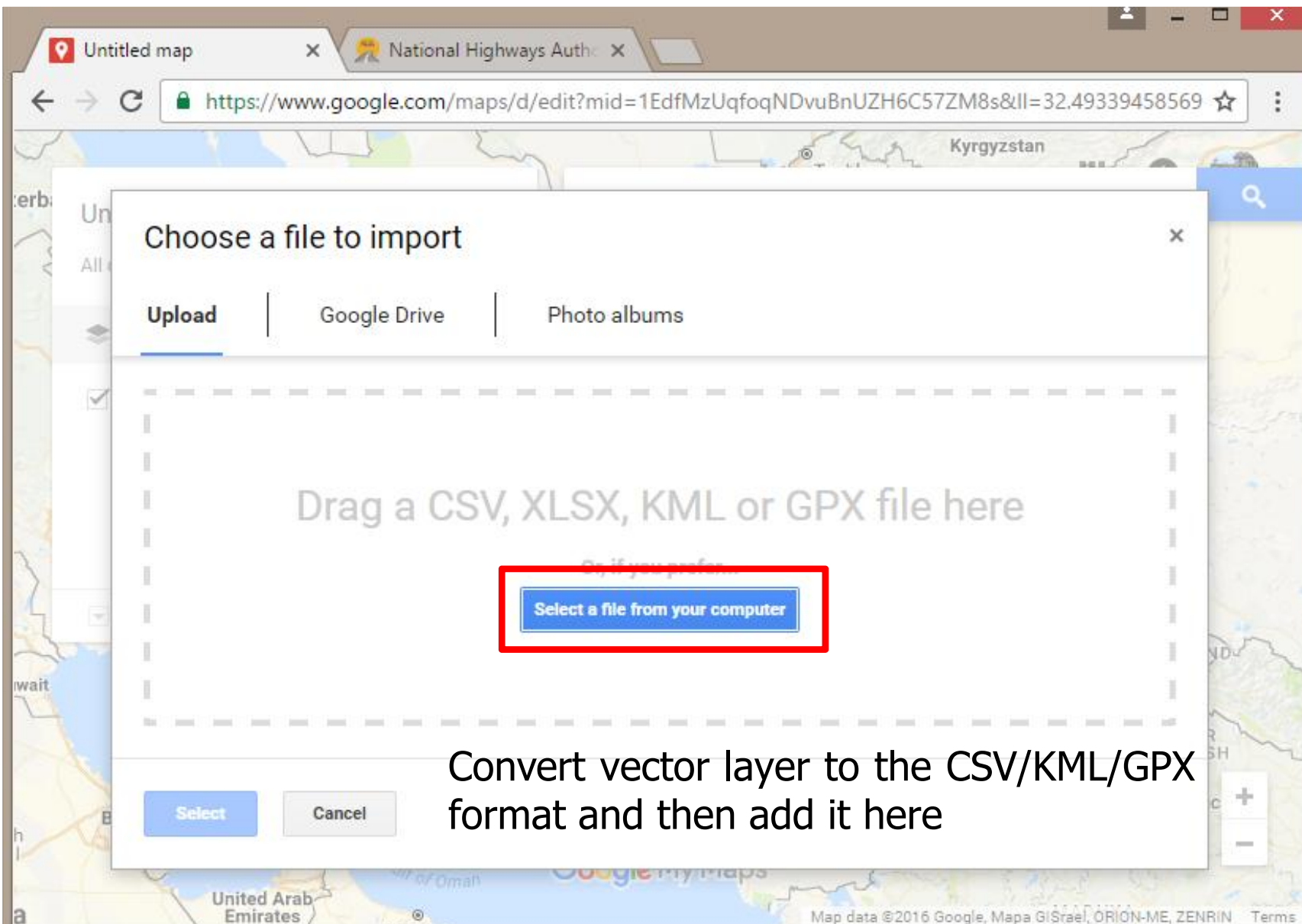
The screenshot displays the Google My Maps web interface. The browser's address bar shows the URL <https://www.google.com/maps/d/>. The page header includes the Google My Maps logo and navigation icons. A red box highlights the '+ CREATE A NEW MAP' button in the top navigation bar. Below the navigation bar, a grid of map thumbnails is visible, each with a title and a date:

- My Village Map**: Nov 18, 2016 (locked)
- Map for Sec C**: Nov 17, 2016 (locked)
- CED UET Peshawar**: Nov 17, 2016 (shared)
- Untitled map**: Nov 17, 2016 (locked)
- 2011 Earthquakes**: Nov 16, 2016 (shared)

Creating Web Based GIS Maps



Creating Web Based GIS Maps



Choose a file to import

Upload | Google Drive | Photo albums

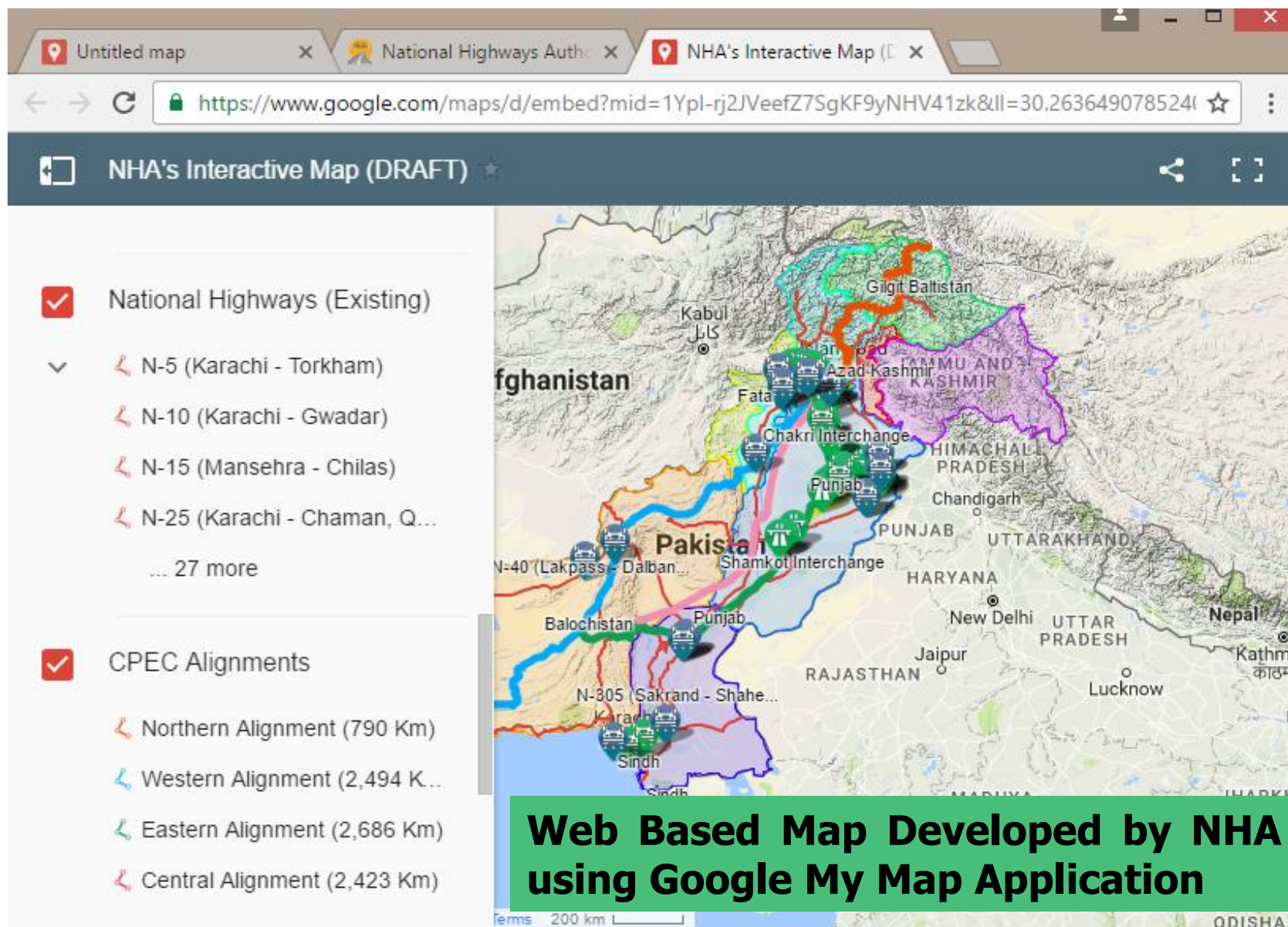
Drag a CSV, XLSX, KML or GPX file here

Select a file from your computer

Select Cancel

Convert vector layer to the CSV/KML/GPX format and then add it here

Creating Web Based GIS Maps



Untitled map x National Highways Auth: x NHA's Interactive Map (L x

<https://www.google.com/maps/d/embed?mid=1Ypl-rj2JVeefZ7SgKF9yNHV41zk&ll=30.263649078524>

NHA's Interactive Map (DRAFT)

- National Highways (Existing)
 - ∨ N-5 (Karachi - Torkham)
 - N-10 (Karachi - Gwadar)
 - N-15 (Mansehra - Chilas)
 - N-25 (Karachi - Chaman, Q...)
 - ... 27 more
- CPEC Alignments
 - Northern Alignment (790 Km)
 - Western Alignment (2,494 K...)
 - Eastern Alignment (2,686 Km)
 - Central Alignment (2,423 Km)

Web Based Map Developed by NHA using Google My Map Application

Terms 200 km L ODISHA

References

- QGIS Training Manual
- QGIS Documentation
- Google My Map Application
- NHA (www.nha.gov.pk)