

LECTURE -06

WORKING WITH DELIMITED TEXT IN QGIS

Course Instructor:

Engr. Hizb Ullah Sajid

Content

- Delimited text
- Importing data from excel spreadsheet
- Working with delimited text in QGIS

Delimited Text

■ What is delimited text?

- A delimited text file is a text file used to store data, in which each line represents a data record (consisting of one or more fields), and each line has fields separated by the delimiter.
- Any character may be used to separate the values, but the most common delimiters are the comma, tab, and colon.
- When values are separated by comma, they result in Comma Separated Values (CSV) format.
- CSV format is readable in QGIS.
- Mostly gis data is in tabular form (spreadsheets) which can be easily converted to delimited text (for instance CSV) and then imported into QGIS (or other GIS software) for further processing.

Delimited Text

■ Example of Delimited Text

Sample Delimited Text (CSV)

ID,Long,Lat,Magnitude

1,71,34,5

2,71.5,34,6

3,71,34.5,5.5

Sample Delimited Text (TSV)

ID	Long	Lat	Magnitude
----	------	-----	-----------

1	71	34	5
---	----	----	---

2	71.5	34	6
---	------	----	---

3	71	34.5	5.5
---	----	------	-----

■ File Format: .txt, .csv

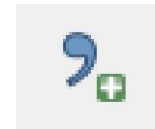
Importing Data from Excel Spreadsheet

- Data (e.g. earthquake, population, traffic, floods, etc.) is usually in excel spreadsheet.
- For processing excel spreadsheet values in QGIS, first convert excel spreadsheet to delimited text (File>Save As>.csv format)
- CSV file can then be loaded in QGIS.

Working with Delimited Text in QGIS

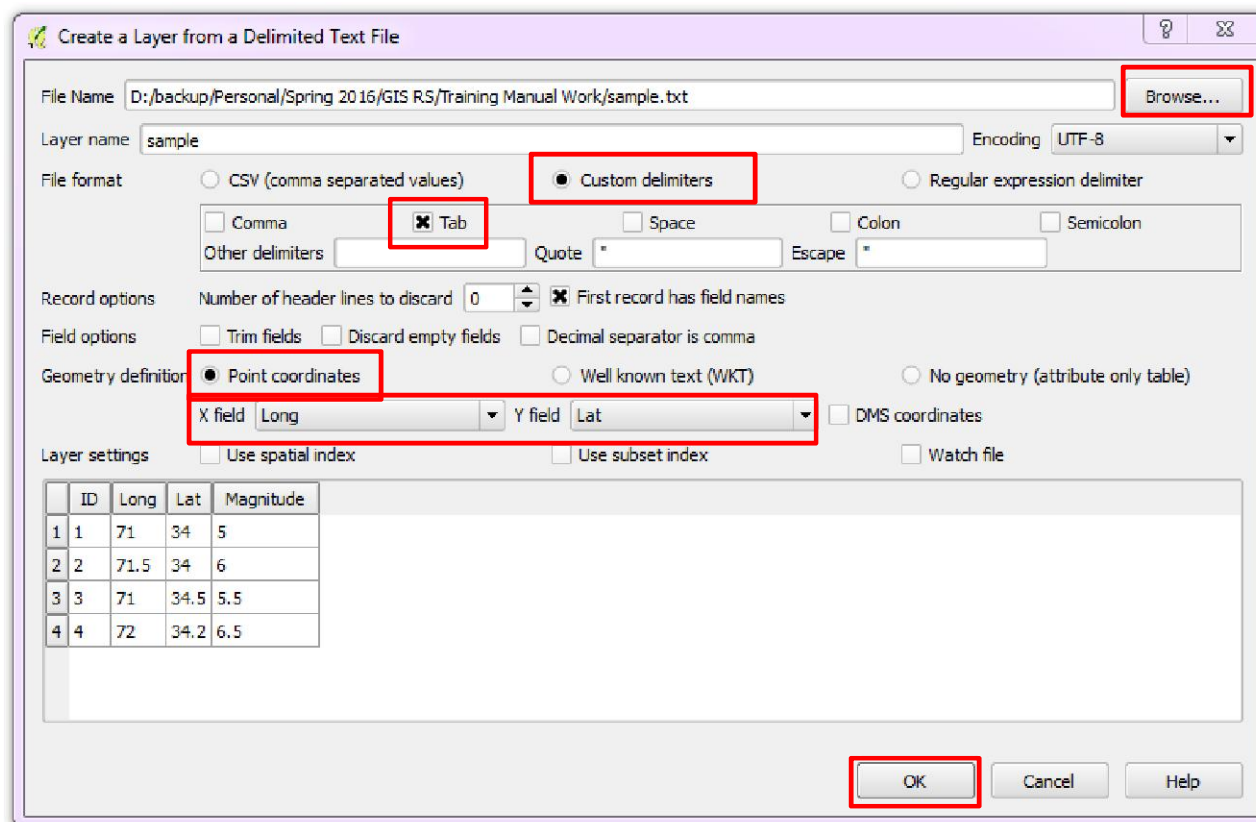
■ For adding delimited text as layer in QGIS:

- Layer > Add Layer > Add Delimited Text Layer
- Manage Layers Toolbox > Add Delimited Text Layer



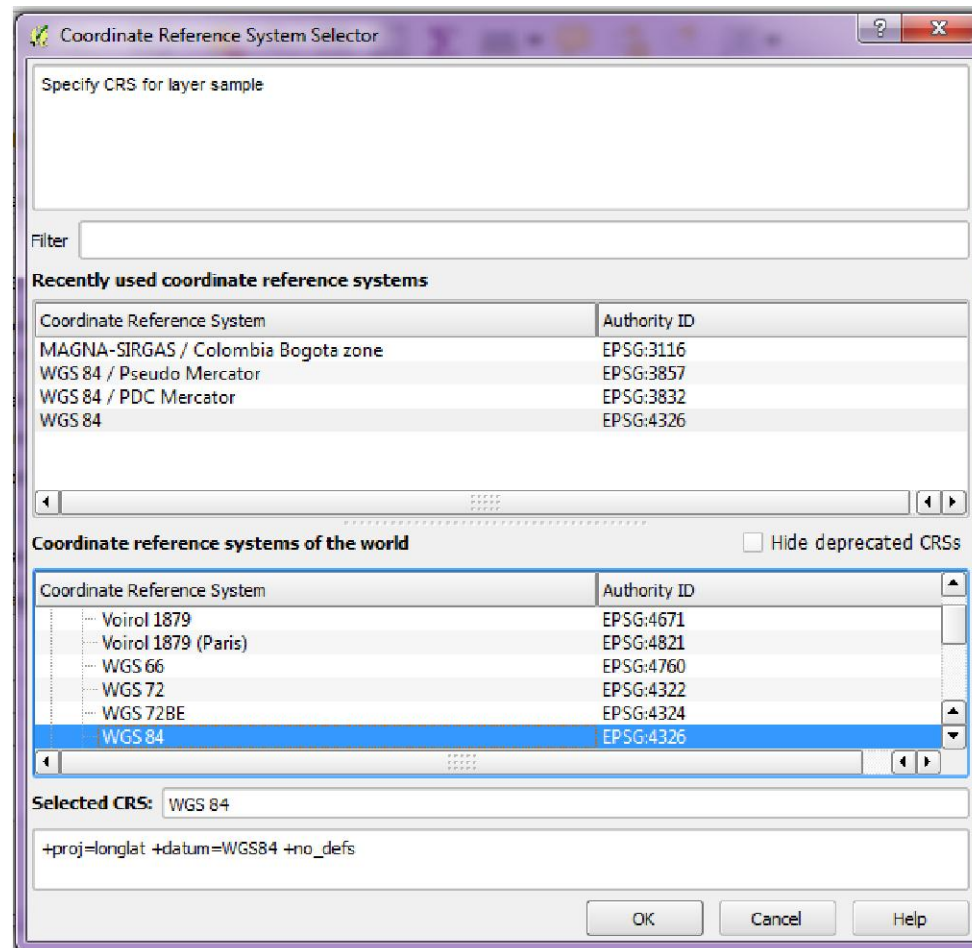
Working with Delimited Text in QGIS

■ Loading TSV as delimited text layer in QGIS:



Working with Delimited Text in QGIS

■ Loading TSV as delimited text layer in QGIS:



References

- QGIS User Manual